




34 Hammond Road Findon SA

3  1  3 

This move-in ready, mid-century solid brick home has been lovingly cared for and cherished, and is perfect for families, professional couples and investors alike looking to capitalise on a suburb western suburbs home that's packed with potential.

Beyond it's sturdy structure, a free flowing floorplans adorns three bedrooms, separate living, an eat-in kitchen, retro bathroom and laundry plus undercover parking. Stretching across 758sqm, the property boast established gardens and lawns that'll let the children and four-legged friends grow up the way that nature intended.

Fresh white walls sparkle against the timber floors, the perfect set for the scenes of a lovingly suburban lifestyle.

Type : House
Land Size : 758 sqm
View : <https://www.crawforddoran.com.au/8112952>



Thomas Crawford
08 8124 8930



Vincent Doran
08 8124 8930

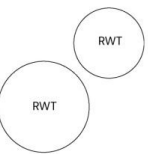
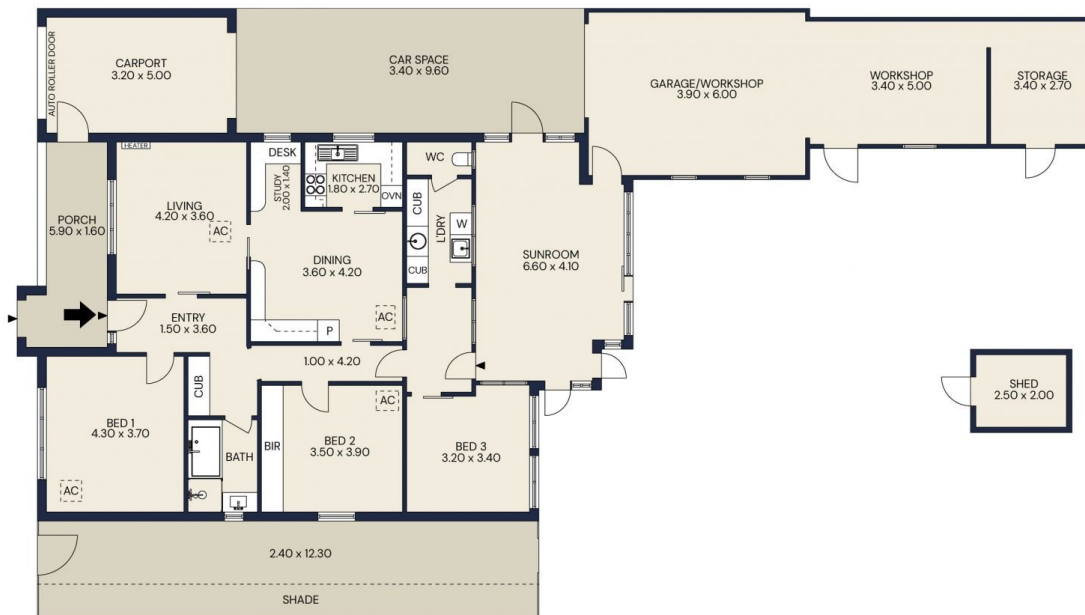
[For full version visit the website](https://www.crawforddoran.com.au)



34 HAMMOND RD, FINDON

CRAWFORD JORAN

The floor plan is not to scale; measurements are indicative and in metres. All features included in this 3D plan are for inspiration purposes only. This is not an exact replica of the property or the position of exterior elements. Plans should not be relied on. Interested parties should make and rely on their own enquiries.



Living area	155sqm
Porch	10sqm
Shed	6sqm
Garage/Workshop	47sqm
Storage	11sqm
Carport	16sqm
Car Space	33sqm
Total area	278sqm



34 HAMMOND RD, FINDON

CRAWFORD JORAN

Scale in metres. Indicative only. All information contained herein is obtained from source we believe to be accurate. We cannot guarantee its accuracy. Interested persons should make and rely on their own enquiries