

10 Peppercorn Way Lightsview SA

3  2  2 

Welcome to 10 Peppercorn Way, standing as a testament to modern luxury and sophisticated living, this architecturally designed townhouse unfolds across two impressive levels, offering a seamless blend of contemporary style and modern day functionality. With two street frontages, the property promises unparalleled privacy while exuding an unmistakable charm and convenience.

Step inside and through the stunning and freshly varnished feature double timber doors, and make your way down the hallway, where you will be greeted by an open-plan kitchen, living, and dining area that immediately sets the tone for the home's grandeur. The kitchen, a masterpiece in itself, features monument two-pack cabinetry juxtaposed with elegant Essastone luxe gloss

[For full version visit the website](https://www.crawfordoran.com.au)

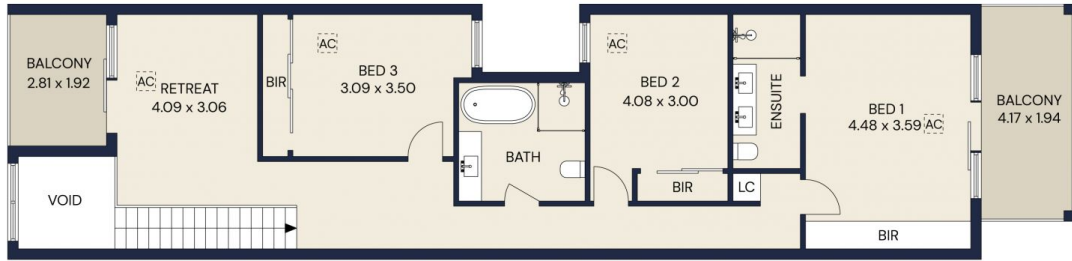
Type : Townhouse
Price : Best Offer by 7pm, 23/9/24
Building Size : 240 sqm
Land Size : 151 sqm
View : <https://www.crawfordoran.com.au/8120084>



Thomas Crawford
08 8124 8930



Jennifer Luong
08 8124 8930



Living area	189sqm
Porch	3sqm
Alfresco	11sqm
Balcony	16sqm
Garage	21sqm
Total area	240sqm



CRAWFORD JORAN

10 PEPPERCORN WAY, LIGHTSVIEW

Scale in metres. Indicative only. All information contained herein is obtained from source we believe to be accurate. We cannot guarantee its accuracy. Interested persons should make and rely on their own enquiries



CRAWFORD JORAN

10 PEPPERCORN WAY, LIGHTSVIEW

The floor plan is not to scale, measurements are indicative and in metres. All features included in this 3D plan are for inspiration purposes only. This is not an exact replica of the property or the position of exterior elements. Plans should not be relied on. Interested parties should make and rely on their own enquiries.