



21 Hurtle Street Croydon SA

3  1  2 

Experience the perfect blend of iconic character and modern open-plan entertaining at 21 Hurtle. This stunning family home, originally built in 1924, has been beautifully renovated and extended. Behind its striking sandstone-clad facade, this bungalow captures the essence of life in this vibrant inner-west destination, making it the picture-perfect dream home.

With a familiar, versatile bungalow footprint gliding over honey-toned solid timber floors and where lofty bedrooms branch off the ornately-dressed return hallway, such bold yesteryear hallmarks couldn't have been better preserved. A re-imagined rear blooms into purpose as the now open-plan light filled entertaining creates a textural-rich social hub where natural light melds magically with the

Type : House
Price : Auction
Land Size : 696 sqm
View : <https://www.crawforddoran.com.au/8124924>

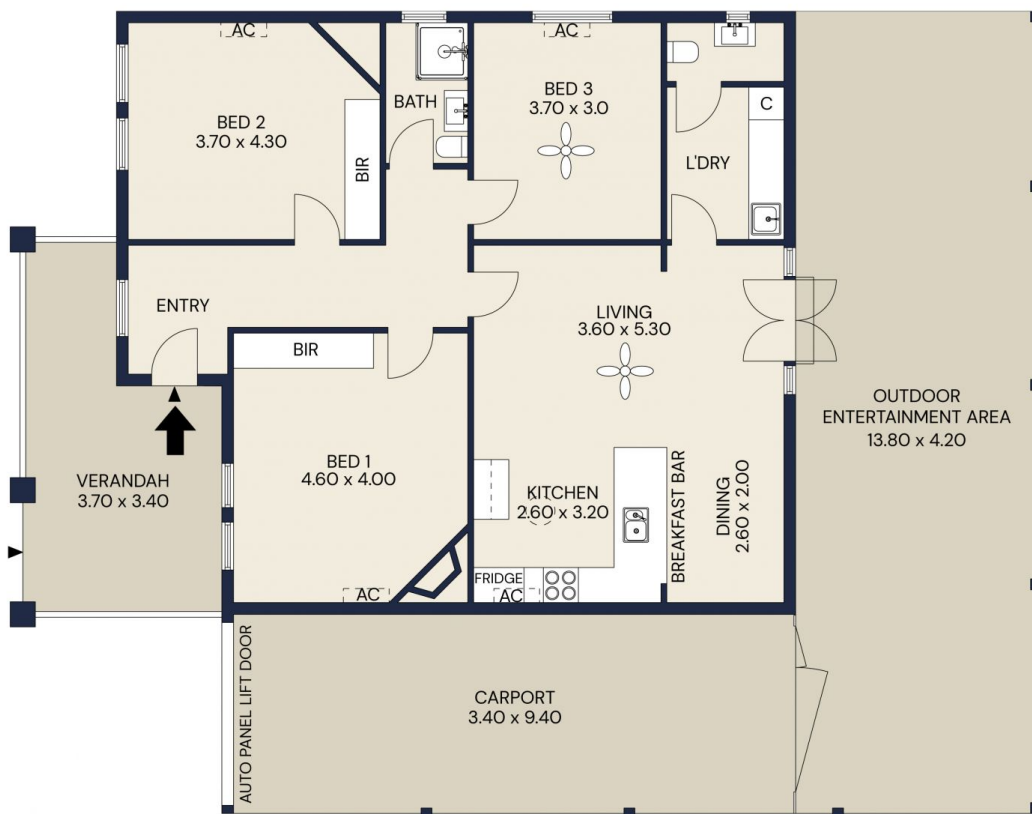


Thomas Crawford
08 8124 8930

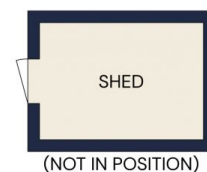


Vincent Doran
08 8124 8930

[For full version visit the website](https://www.crawforddoran.com.au)



| | |
|----------------------------|---------------|
| Living area | 104sqm |
| Verandah | 17sqm |
| Carport | 33sqm |
| Outdoor Entertainment Area | 57sqm |
| Shed | 6sqm |
| Total area | 217sqm |



CRAWFORD & DORAN

21 HURTLE STREET, CROYDON

Scale in metres. Indicative only. All information contained herein is obtained from source we believe to be accurate. We cannot guarantee its accuracy. Interested persons should make and rely on their own enquiries



CRAWFORD & DORAN

21 HURTLE STREET, CROYDON

The floor plan is not to scale; measurements are indicative and in metres. All features included in this 3D plan are for inspiration purposes only. This is not an exact replica of the property or the position of exterior elements. Plans should not be relied on. Interested parties should make and rely on their own enquiries.