



1104/10 Park Terrace Bowden SA

2  2  1 

Nestled in the thriving, vibrant community of Bowden, this stunning penthouse apartment offers top-floor luxury with unbeatable views of the Adelaide CBD and surrounding parklands. Situated in the highly desirable Park Central complex, this is an unparalleled opportunity to enjoy contemporary, lock up and leave living in a sought-after location.

The spacious open-plan layout seamlessly connects the living, kitchen, and dining areas, creating an inviting space perfect for entertaining or relaxing. The modern kitchen is a chef's delight, equipped with Miele appliances, a sleek under-bench oven, a dishwasher, and a stylish island bench that doubles as a central hub for casual dining. With ample storage and premium benchtops, this kitchen

[For full version visit the website](https://www.crawforddoran.com.au/81319)

Type : Apartment
Price : Best Offer by 7pm, 3/10/24
Building Size : 89 sqm
View : <https://www.crawforddoran.com.au/81319>
70

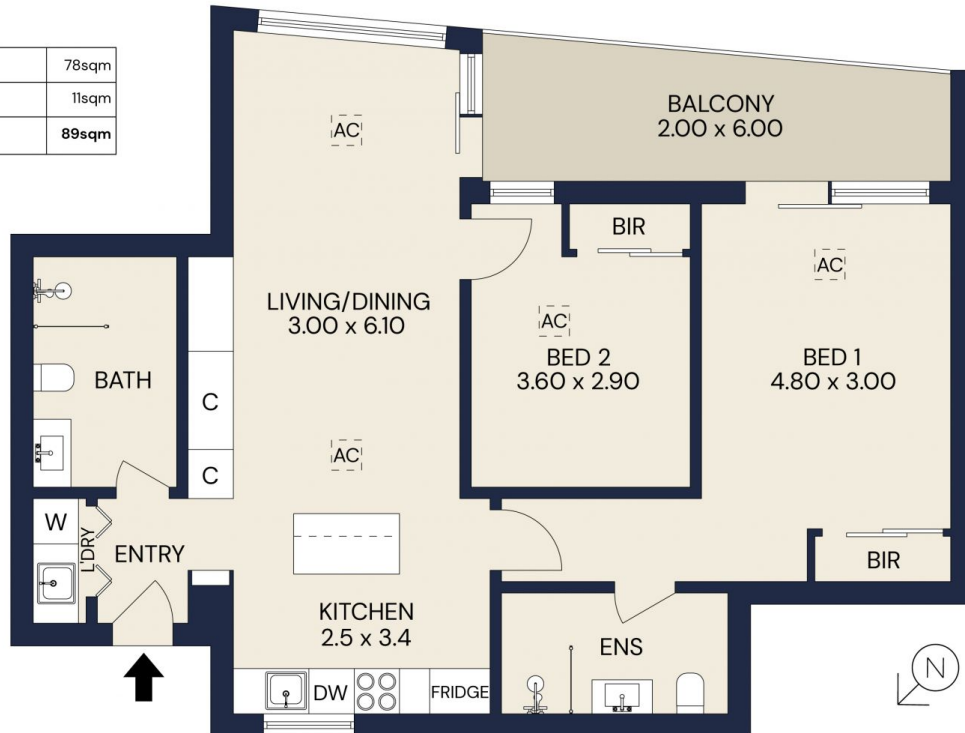


Vincent Doran
08 8124 8930



Thomas Crawford
08 8124 8930

Living area	78sqm
Balcony	11sqm
Total area	89sqm



1104/10 PARK TERRACE, BOWDEN

CRAWFORD JORAN

Scale in metres. Indicative only. All information contained herein is obtained from source we believe to be accurate. We cannot guarantee its accuracy. Interested persons should make and rely on their own enquiries



1104/10 PARK TERRACE, BOWDEN

CRAWFORD JORAN

The floor plan is not to scale; measurements are indicative and in metres. All features included in this 3D plan are for inspiration purposes only. This is not an exact replica of the property or the position of exterior elements. Plans should not be relied on. Interested parties should make and rely on their own enquiries.