



**25/118 Lipsett Terrace Brooklyn Park SA**

2  1  1 

A delightfully easy lock-up and leave lifestyle awaits here for savvy investors, astute first home buyers and downsizers. This impeccable solid brick unit, part of a single-level, manicured complex, has been fully renovated with impressive finishes, offering a fresh and modern interior ready for immediate occupation and enjoyment.

The property boasts two well-appointed bedrooms, each with built-in-robos, electric roller shutters for extra comfort and ceiling fans. A contemporary bathroom blends trendy timber finishes with black fixtures with crisp white floor-to-ceiling tiles, offering a light and bright place to wash up and wind down. The heart of the home is the open plan hub, complete with a modern, well-equipped kitchen, dining area and living space.

**Type** : Unit

**Price** : Best Offer by 7pm, 8/10/24

**View** : <https://www.crawfordoran.com.au/8132156>



**Vincent Doran**  
08 8124 8930



**Thomas Crawford**  
08 8124 8930

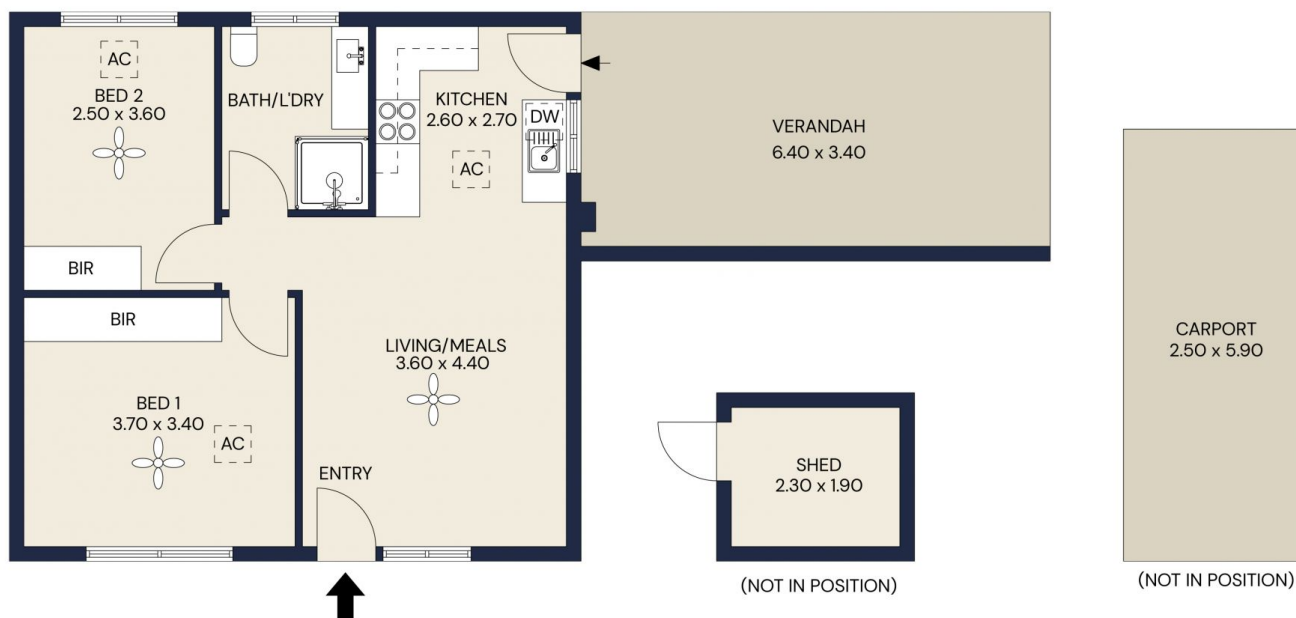
[For full version visit the website](https://www.crawfordoran.com.au)



## 25/118 LIPSETT TERRACE , BROOKLYN PARK

CRAWFORD JORAN

The floor plan is not to scale; measurements are indicative and in metres. All features included in this 3D plan are for inspiration purposes only. This is not an exact replica of the property or the position of exterior elements. Plans should not be relied on. Interested parties should make and rely on their own enquiries.



Living area	59sqm
Verandah	22sqm
Carport	15sqm
Shed	6sqm
<b>Total area</b>	<b>102sqm</b>

## 25/118 LIPSETT TERRACE , BROOKLYN PARK

CRAWFORD JORAN

Scale in metres. Indicative only. All information contained herein is obtained from source we believe to be accurate. We cannot guarantee its accuracy. Interested persons should make and rely on their own enquiries.