




12 Vauxhall Street Croydon Park SA

4  3  4 

Discover a modern family haven built in 2019, featuring an inviting and versatile floor plan with four spacious bedrooms and a harmonious blend of indoor and outdoor living spaces, complemented by numerous luxury modern conveniences.

The contemporary facade, adorned in striking charcoal grey with crisp accents, welcomes you into an enticing entrance that beckons further exploration. Inside, meticulous attention to detail is evident, showcasing customised features that enhance the home's charm.

As you enter, a light-filled formal lounge greets you, creating a serene atmosphere perfect for quiet relaxation. The design emphasises both togetherness and privacy,

[For full version visit the website](https://www.crawfordoran.com.au/8182047)

Type : House
Price : Best Offer by 7pm, 25/11/24
Building Size : 252 sqm
View : <https://www.crawfordoran.com.au/8182047>



Thomas Crawford
08 8124 8930



Jennifer Luong
08 8124 8930



1ST FL



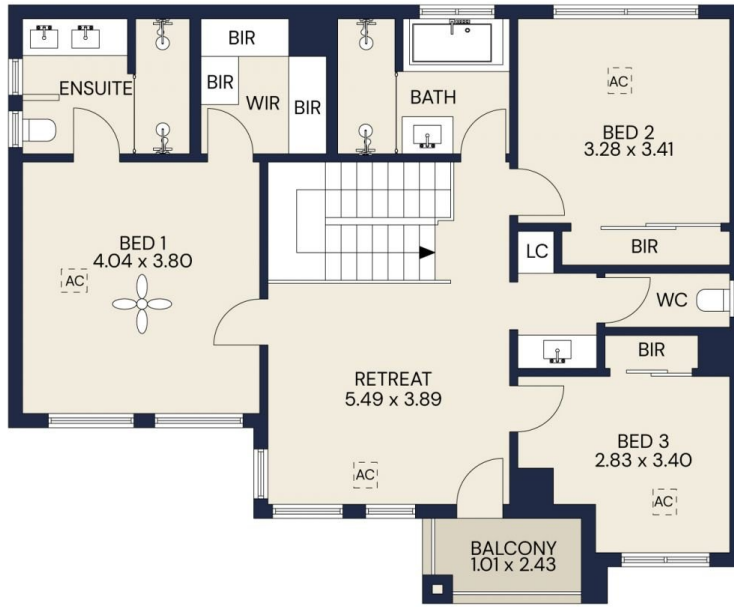
GROUND FL



12 VAUXHALL STREET, CROYDON PARK

 CRAWFORD & DORAN

The floor plan is not to scale; measurements are indicative and in metres. All features included in this 3D plan are for inspiration purposes only. This is not an exact replica of the property or the position of exterior elements. Plans should not be relied on. Interested parties should make and rely on their own enquiries.



Living area	206.71sqm
Balcony	2.89sqm
Porch	2.89sqm
Alfresco	21.59sqm
Double Garage	36.21sqm
Total area	270.29sqm

1ST FL



GROUND FL



12 VAUXHALL STREET, CROYDON PARK

 CRAWFORD & DORAN

Scale in metres. Indicative only. All information contained herein is obtained from source we believe to be accurate. We cannot guarantee its accuracy. Interested persons should make and rely on their own enquiries